



For more details of our products, please log into  
[www.eps-connect.com](http://www.eps-connect.com)  
Information in this catalogue is correct at the time of  
printing. EPS-CONNECT LTD reserves the right to  
modify all products specifications without prior notice  
and not liable for any errors contained.

**Innovate Efficient Connectivity**

Complete Your Copper System  
In One-Stop Solution







# Company Profile

Brand was founded in 1992 , starting with power cable and more than 20-year experiences in cable production, has provides range of products for Structured Cabling System ( SCS ) , included copper cable system (Category 5e, 6, 6A)voice system, fiber optical system products.

Factory is located in Shenzhen, China with one facility around 8000 square meters . Based on high quality manpower and professional experiences in this industrials . We have the confidence and ability to design and manufacture various products for customers.

Own R&D team to improve our products according to real need from End User, your request is our goal!

# Contents

New Products .....	01/02
QT - Quick Installation Tool.....	01/02
SCS - Copper System Solutions .....	03/06
LC - LAN Cables .....	07/10
PC - Patch Cords .....	11/16
KJ - Keystone Jacks .....	17/22
PP - Patch Panels .....	23/24
FP - Faceplates .....	25/26
Contacts .....	28



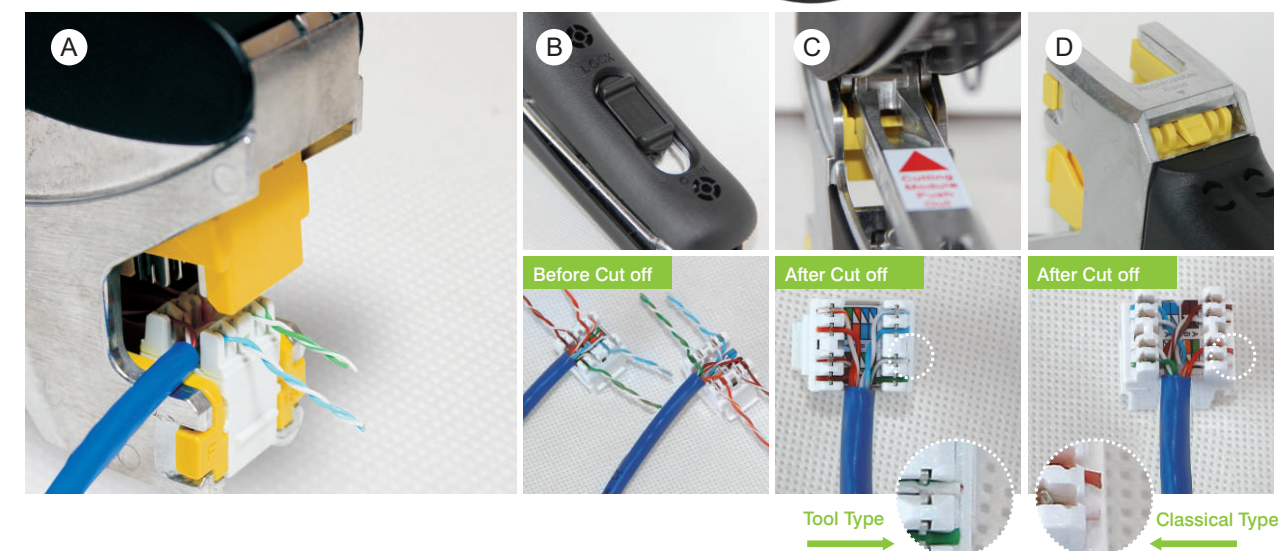
# NEW PRODUCTS!

## TOOL SOLUTION | Quick Installation Tool

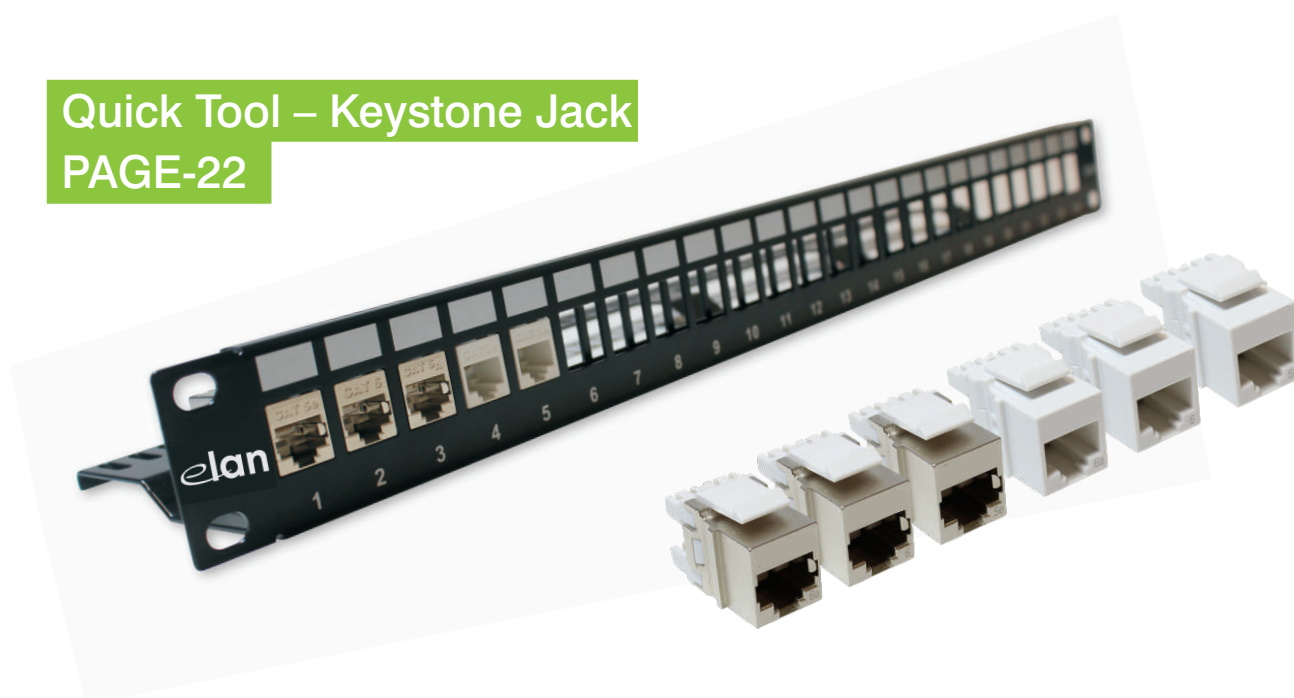


### FEATURES

- \* Universal for Quick Tool type Jacks
- \* Extra Back up Modular
- \* Punch down Stopper Design
- \* Lightweight Humanized Design
- \* Termination / Cutting one Design



### Quick Tool – Keystone Jack PAGE-22



### DESCRIPTION

Quick Installation Tool provides termination and cut off in seconds.  
Universal modular for full series quick tool type keystone jack, maximum improve performance and minimum insertion loss,  
Avoiding mistakes in most efficient way.

### ORDERING INFORMATION

#### Description

Crimping Tool, Jack Type, 180 degree  
Striping Tool - Simple

LS-6A Cat.6A Keystone Jack, Unshield 180 degree, white, Tool Type  
LS-6A Cat.6A Keystone Jack, Shield 180 degree, Tool Type

LS-6 Cat.6 Keystone Jack, Unshield 180 degree, white, Tool Type  
LS-6 Cat.6 Keystone Jack, Shield 180 degree, Tool Type

LS-5E Cat.5E Keystone Jack, Unshield 180 degree, white, Tool Type  
LS-5E Cat.5E Keystone Jack, Shield 180 degree, Tool Type





# COPPER SYSTEM SOLUTION | Category 6A

## Category 6A U/UTP 10G Solution

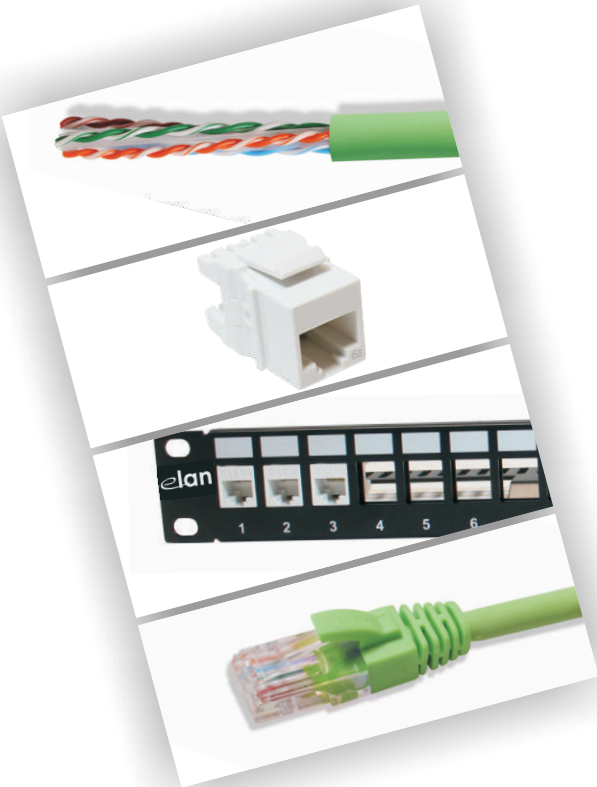
### UNSHIEDED COPPER CABLING SYSTEM

DESCRIPTION
Category 6A U/UTP 10 G Un-Shield solution provide higher transmission performance, guaranteed to 500Mhz and meets TIA568 C.2 specification.
Combined with Un-Shield CAT 6A Keystone Jack, Patch Cords, and Patch Panel, it provides excellent Alien Crosstalk suppression.
The Solution is for hospital, government, manufacturing and other environments where EMI may be present and data security is paramount.

FEATURES
* Independently tested and verified by ETL * Humanized Design
STANDARDS COMPLIANCE
* TIA 568 C.2 * ISO 11801 CLASS EA * UL Listed * 10G BASE-T Networks supported

### ORDERING INFORMATION

Description
LS-6A U/UTP Cat.6A PVC CM Green 305m/Box
LS-6A U/UTP Cat.6A LSZH Green 305m/ Box
LS-6A Cat.6A Keystone Jack, Unshield 180 degree, white
LS-6A Cat.6A Keystone Jack, Unshield 180 degree, white, Tool Type
1HU Blank Panel 24P Un-Shield W/ Cat 6A Keystone Jack
1HU Blank Panel 24P Un-Shield
LS-6A F/UTP Patch Cord PVC CM ** XX M
LS-6A F/UTP Patch Cord PVC CMR ** XX M
LS-6A F/UTP Patch Cord PVC CMP ** XX M
LS-6A F/UTP Patch Cord LSZH ** XX M



## Category 6A F/FTP 10G Solution

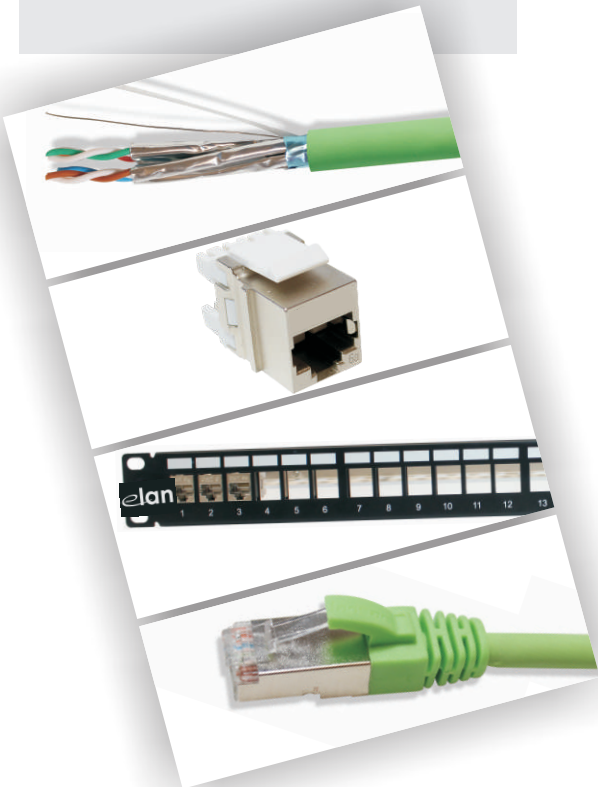
### SHIEDED COPPER CABLING SYSTEM

DESCRIPTION
Category 6A F/FTP 10 G Shield solution provide higher level of security and protection for sensitive environments.
CAT 6A F/FTP Cable has guaranteed performance to 500Mhz and meets TIA568 C.2 specification.
Combined with Shield CAT 6A Keystone Jack, Patch Cords, and Patch Panel, it provides excellent Alien Crosstalk suppression.
The Solution is for hospital, government, manufacturing and other environments where EMI may be present and data security is paramount.

FEATURES
* Independently tested and verified by ETL * Humanized Design
STANDARDS COMPLIANCE
* TIA 568 C.2 * ISO 11801 CLASS EA * UL Listed * 10G BASE-T Networks supported

### ORDERING INFORMATION

Description
LS-6A F/FTP Cat.6A PVC CM Green 305m/Drum
LS-6A F/FTP Cat.6A LSZH Green 305m/Drum
LS-6A Cat.6A Keystone Jack, Shield 180 degree, Tool Free
LS-6A Cat.6A Keystone Jack, Shield 180 degree, white, Tool Type
1HU Blank Panel 24P Shield W/ Cat 6A Keystone Jack
1HU Blank Panel Shield 24P
LS-6A F/FTP Patch Cord PVC CM ** XX M
LS-6A F/FTP Patch Cord PVC CMR ** XX M
LS-6A F/FTP Patch Cord PVC CMP ** XX M
LS-6A F/FTP Patch Cord LSZH ** XX M





# COPPER SYSTEM SOLUTION | Category 6

## Category 6 U/UTP 250Mhz Solution

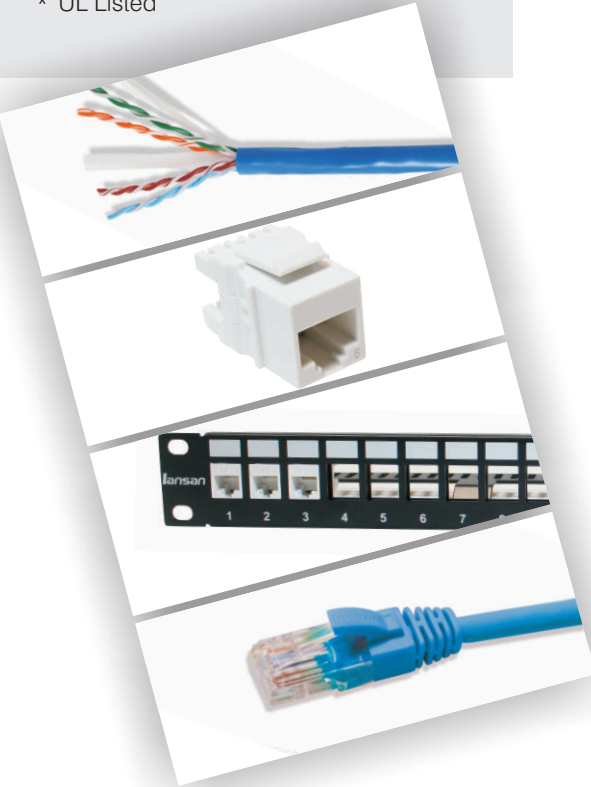
### UNSHIEDED COPPER CABLING SYSTEM

DESCRIPTION
Category 6 U/UTP 250Mhz Un-Shield solution provide higher performance and more stable transmission rate than Category 5E.
CAT 6 U/UTP Cable has guaranteed performance to 500Mhz and meets TIA568 C.2 specification.
Combined with Un-Shield CAT 6 Keystone Jack, Patch Cords, and Patch Panel, it provides excellent Alien Crosstalk suppression.
The Solution is for hospital, government, manufacturing and other environments.

FEATURES
<ul style="list-style-type: none"><li>* Independently tested and verified by ETL</li><li>* Humanized Design</li><li>* Full series Keystone Jack supported</li><li>* Quick Installation design available</li></ul>
STANDARDS COMPLIANCE
<ul style="list-style-type: none"><li>* TIA 568 C.2</li><li>* ISO 11801 CLASS E</li><li>* UL Listed</li></ul>

#### ORDERING INFORMATION

Description
LS-6 U/UTP Cat.6 PVC CM Blue 305m/Box
LS-6 U/UTP Cat.6 LSZH Green 305m/ Box
LS-6 Cat.6 Keystone Jack, Unshield 180 degree, white
LS-6A Cat.6A Keystone Jack, Shield 180 degree, white, Tool Type
1HU Blank Panel 24P Un-Shield W/ Cat 6 Keystone Jack
1HU Blank Panel 24P Un-Shield
LS-6 U/UTP Patch Cord PVC CM ** XX M
LS-6 U/UTP Patch Cord PVC CMR ** XX M
LS-6 U/UTP Patch Cord PVC CMP ** XX M
LS-6 U/UTP Patch Cord LSZH ** XX M



## Category 6 F/UTP 250Mhz Solution

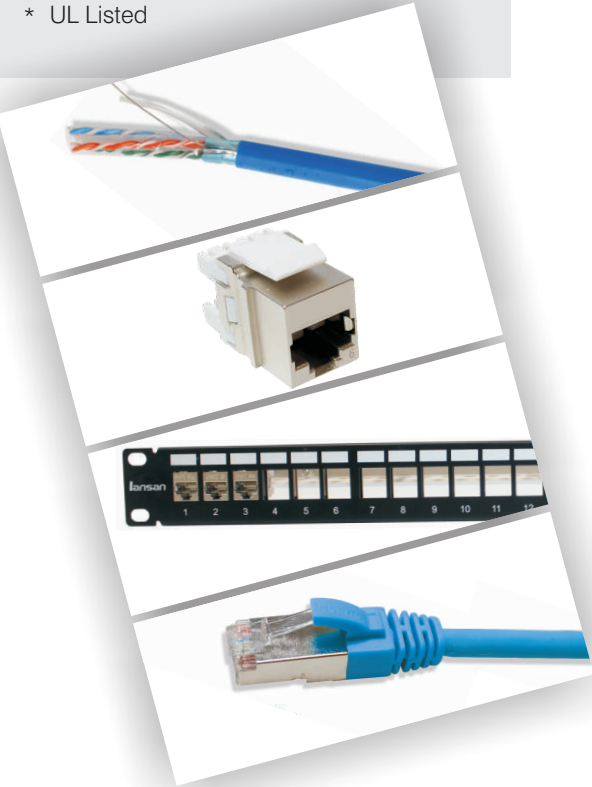
### SHIEDED COPPER CABLING SYSTEM

DESCRIPTION
Category 6 F/UTP 250Mhz Shield solution provide higher level of security and protection for sensitive environments.
CAT 6 F/UTP Cable has guaranteed performance to 500Mhz and meets TIA568 C.2 specification.
Combined with Shield CAT 6 Keystone Jack, Patch Cords, and Patch Panel, it provides excellent Alien Crosstalk suppression.
The Solution is for hospital, government, manufacturing and other environments where EMI may be present and data security is paramount.

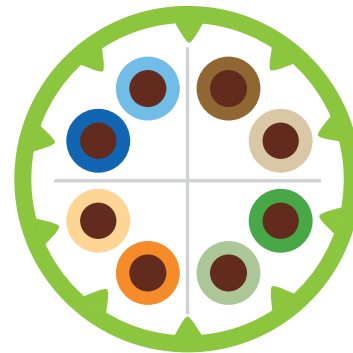
FEATURES
<ul style="list-style-type: none"><li>* Independently tested and verified by ETL</li><li>* Humanized Design</li><li>* Full series Keystone Jack supported</li><li>* Quick Installation design available</li></ul>
STANDARDS COMPLIANCE
<ul style="list-style-type: none"><li>* TIA 568 C.2</li><li>* ISO 11801 CLASS E</li><li>* UL Listed</li></ul>

#### ORDERING INFORMATION

Description
LS-6 F/UTP Cat.6 PVC CM Blue 305m/Drum
LS-6 F/UTP Cat.6 LSZH Green 305m/Drum
LS-6 Cat.6 Keystone Jack, Shield 180 degree, Tool Free
LS-6 Cat.6 Keystone Jack, Shield 180 degree, Tool Type
1HU Blank Panel 24P Shield W/ Cat 6 Keystone Jack
1HU Blank Panel 24P Shield
LS-6 F/UTP Patch Cord PVC CM ** XX M
LS-6 F/UTP Patch Cord PVC CMR ** XX M
LS-6 F/UTP Patch Cord PVC CMP ** XX M
LS-6 F/UTP Patch Cord LSZH ** XX M



## LAN CABLE Category 6A Un-shield



### Category 6A U/UTP 10G Cable UNSHIEDED COPPER CABLING SYSTEM

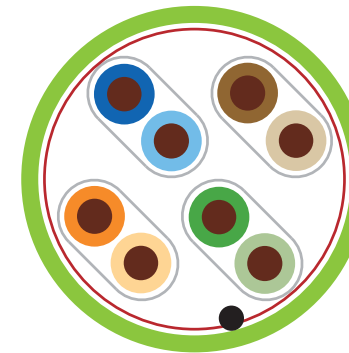
DESCRIPTION	SPECIFICATION
Category 6A U/UTP 10G Cable support high speed Enterprise and Data Center applications	Conductor 23AWG, Solid Copper
Cables designed in Saw-tooth structure to against Alien Crosstalk.	Insulation Foamed Polyethylene (FPE)
Combined with Un-Shield Keystone, Patch Cords and Patch Panel, it provides excellent compatible performance.	Outer Sheath Low Smoke Zero Halogen (LSZH)
	Installation Temperature 0°C ~ +50°C
	Operating Temperature -20°C ~ +60°C
	Installation Min Bend Radius 70mm
	Operating Min Bend Radius 40mm
FEATURES	STANDARDS COMPLIANCE
* Independently tested and verified by ETL	* TIA 568 C.2
* Guaranteed to meet TIA 568 C.2 and ISO/IEC 11801 specifications	* ISO 11801 CLASS EA
* Saw-tooth Structure design	* UL Listed

#### ORDERING INFORMATION

##### Description

LS-6A U/UTP Cat.6A PVC CM Green 305m/Box  
LS-6A U/UTP Cat.6A PVC CMR Brown 305m/ Box  
LS-6A U/UTP Cat.6A PVC CMP Red 305m/ Box  
LS-6A U/UTP Cat.6A LSZH Green 305m/ Box

## LAN CABLE Category 6A Shield



### Category 6A F/FTP 10G Cable SHIEDED COPPER CABLING SYSTEM

DESCRIPTION	SPECIFICATION
Category 6A F/FTP 10G Cable support high speed Enterprise and Data Center applications	Conductor 23AWG, Solid Copper
Double Shield Structure Provide better Noise Protection to against Alien Crosstalk.	Insulation Foamed Polyethylene (FPE)
Combined with Shield Keystone, Patch Cords and Patch Panel, it provides excellent compatible performance.	Shield Individual / Overall Aluminum Foil / Drain wire
	Outer Sheath Low Smoke Zero Halogen (LSZH)
	Installation Temperature 0°C ~ +50°C
	Operating Temperature -20°C ~ +60°C
	Installation Min Bend Radius 70mm
	Operating Min Bend Radius 40mm
FEATURES	STANDARDS COMPLIANCE
* Independently tested and verified by ETL	* TIA 568 C.2
* Guaranteed to meet TIA 568 C.2 and ISO/IEC 11801 specifications	* ISO 11801 CLASS EA
* Double Shield Protection	* UL Listed

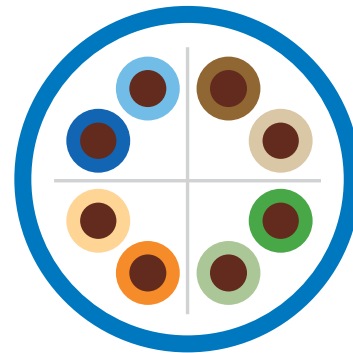
#### ORDERING INFORMATION

##### Description

LS-6A F/FTP Cat.6A PVC CM Green 305m/Drum  
LS-6A F/FTP Cat.6A PVC CMR Brown 305m/Drum  
LS-6A F/FTP Cat.6A PVC CMP Red 305m/Drum  
LS-6A F/FTP Cat.6A LSZH Green 305m/Drum



## LAN CABLE Category 6 Unshield



### Category 6 U/UTP 250Mhz Cable UNSHIEDED COPPER CABLING SYSTEM

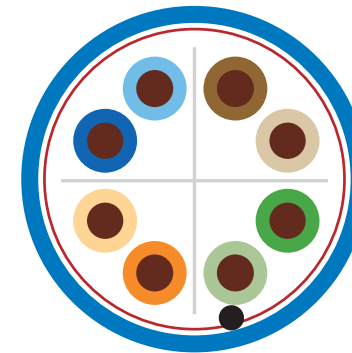
DESCRIPTION	SPECIFICATION
Category 6 U/UTP 250Mhz Cable be used to Upgrade Category 5E system provide higher transmission, at least twice than CAT5E.	Conductor 23AWG, Solid Copper
Center Cross design to against the NEXT and provide more stable performance.	Insulation High Density Polyethylene (HDPE)
Big Pulling Hole Design allows installer to lay 10 Boxes in the meantime without jam issues.	Outer Sheath Polyvinyl Chloride (PVC)
Combined with Un-Shield Keystone, Patch Cords and Patch Panel, it provides excellent compatible performance.	Installation Temperature 0°C ~ +50°C
	Operating Temperature -20°C ~ +60°C
	Installation Min Bend Radius 70mm
	Operating Min Bend Radius 40mm
FEATURES	STANDARDS COMPLIANCE
* Independently tested and verified by ETL	* TIA 568 C.2
* Guaranteed to meet TIA 568 C.2 and ISO/IEC 11801 specifications	* ISO 11801 CLASS E
	* ETL approved
* Center Cross Design	* UL Listed
* Big Pulling Hole Design	

#### ORDERING INFORMATION

##### Description

LS-6 U/UTP Cat.6 PVC CM Blue 305m/Box  
LS-6 U/UTP Cat.6 PVC CMR Brown 305m/ Box  
LS-6 U/UTP Cat.6 PVC CMP Red 305m/ Box  
LS-6 U/UTP Cat.6 LSZH Green 305m/ Box

## LAN CABLE Category 6 Shield



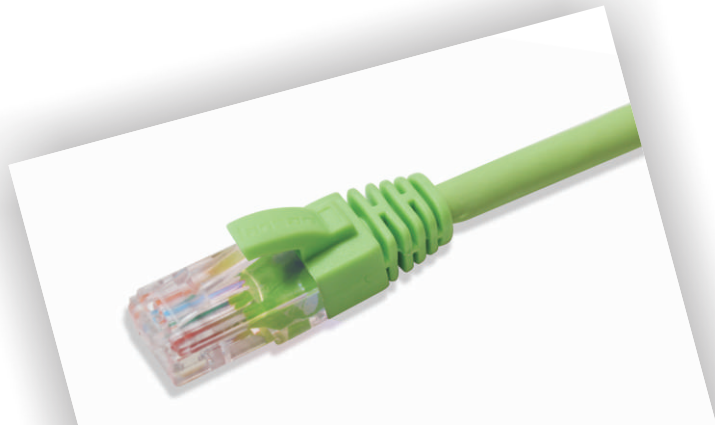
### Category 6 F/UTP 250Mhz Cable SHIEDED COPPER CABLING SYSTEM

DESCRIPTION	SPECIFICATION
Category 6 F/UTP 250Mhz Cable be used to Upgrade Category 5E system provide higher transmission, at least twice than CAT5E.	Conductor 23AWG, Solid Copper
Center Cross design to against the NEXT and provide more stable performance.	Insulation High Density Polyethylene (HDPE)
Big Pulling Hole Design allows installer to lay 10 Boxes in the meantime without jam issues.	Shield Overall Aluminum Foil Tape / Drain Wire
Combined with Shield Keystone, Patch Cords and Patch Panel, it provides excellent compatible performance.	Outer Sheath Polyvinyl Chloride (PVC)
	Installation Temperature 0°C ~ +50°C
	Operating Temperature -20°C ~ +60°C
	Installation Min Bend Radius 70mm
	Operating Min Bend Radius 40mm
FEATURES	STANDARDS COMPLIANCE
* Independently tested and verified by ETL	* TIA 568 C.2
* Guaranteed to meet TIA 568 C.2 and ISO/IEC 11801 specifications	* ISO 11801 CLASS E
	* ETL approved
* Center Cross Design	* UL Listed
* Big Pulling Hole Design	

#### ORDERING INFORMATION

##### Description

LS-6 F/UTP Cat.6 PVC CM Blue 305m/Drum  
LS-6 F/UTP Cat.6 PVC CMR Brown 305m/Drum  
LS-6 F/UTP Cat.6 PVC CMP Red 305m/Drum  
LS-6 F/UTP Cat.6 LSZH Green 305m/Drum



# PATCH CORD

## Category 6A Un-shield



### Category 6A F/UTP Patch Cord

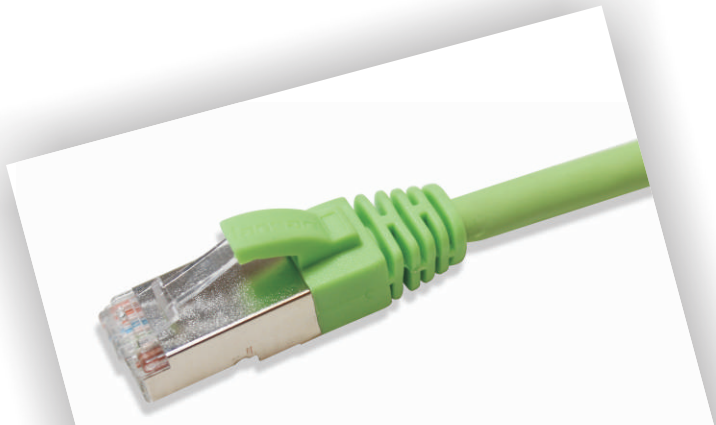
#### UNSHIEDED COPPER CABLING SYSTEM

DESCRIPTION	SPECIFICATION														
Category 6A F/UTP Patch Cords are made in flexible stranded conductor with Snag-less Booted Design, easy to insert and remove cables in high density applications.  Combined with Un-Shield Keystone, LAN Cable and Patch Panel, it provides excellent compatible performance.	<table><tr><td>Conductor</td><td>26AWG, Stranded Copper</td></tr><tr><td>Insulation</td><td>Foamed Polyethylene (FPE)</td></tr><tr><td>Shield</td><td>Overall Aluminum Foil / Drain wire</td></tr><tr><td>Outer Sheath</td><td>Low Smoke Zero Halogen (LSZH)</td></tr><tr><td>Plug</td><td>Gold plated connector</td></tr><tr><td>Installation Temperature</td><td>0°C ~ +50°C</td></tr><tr><td>Operating Temperature</td><td>-20°C ~ +60°C</td></tr></table>	Conductor	26AWG, Stranded Copper	Insulation	Foamed Polyethylene (FPE)	Shield	Overall Aluminum Foil / Drain wire	Outer Sheath	Low Smoke Zero Halogen (LSZH)	Plug	Gold plated connector	Installation Temperature	0°C ~ +50°C	Operating Temperature	-20°C ~ +60°C
Conductor	26AWG, Stranded Copper														
Insulation	Foamed Polyethylene (FPE)														
Shield	Overall Aluminum Foil / Drain wire														
Outer Sheath	Low Smoke Zero Halogen (LSZH)														
Plug	Gold plated connector														
Installation Temperature	0°C ~ +50°C														
Operating Temperature	-20°C ~ +60°C														
FEATURES	STANDARDS COMPLIANCE														
<ul style="list-style-type: none"><li>* Independently tested and verified by ETL</li><li>* Guaranteed to meet TIA 568 C.2 and ISO/IEC 11801 specifications</li><li>* Snag-less Protection Design</li><li>* Multi-Color options available</li></ul>	<ul style="list-style-type: none"><li>* TIA 568 C.2</li><li>* ISO 11801 CLASS EA</li><li>* ETL approved</li><li>* UL Listed</li></ul>														

#### ORDERING INFORMATION

##### Description

LS-6A F/UTP Patch Cord PVC CMR   \*\*   XX M  
LS-6A F/UTP Patch Cord PVC CMP   \*\*   XX M  
LS-6A F/UTP Patch Cord LSZH   \*\*   XX M



# PATCH CORD

## Category 6A Shield



### Category 6A F/FTP Patch Cord

#### SHIEDED COPPER CABLING SYSTEM

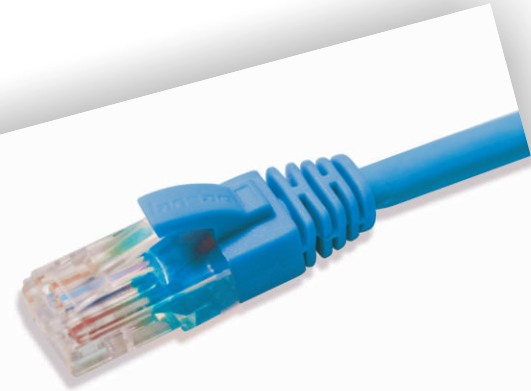
DESCRIPTION	SPECIFICATION														
Category 6A F/FTP Patch Cords are made in flexible stranded conductor with Snag-less Booted Design, easy to insert and remove cables in high density applications.  Combined with Shield Keystone, LAN Cable and Patch Panel, it provides excellent compatible performance.	<table><tr><td>Conductor</td><td>26AWG, Stranded Copper</td></tr><tr><td>Insulation</td><td>Foamed Polyethylene (FPE)</td></tr><tr><td>Shield</td><td>Individual / Overall Aluminum Foil / Drain wire</td></tr><tr><td>Outer Sheath</td><td>Low Smoke Zero Halogen (LSZH)</td></tr><tr><td>Plug</td><td>Gold plated connector</td></tr><tr><td>Installation Temperature</td><td>0°C ~ +50°C</td></tr><tr><td>Operating Temperature</td><td>-20°C ~ +60°C</td></tr></table>	Conductor	26AWG, Stranded Copper	Insulation	Foamed Polyethylene (FPE)	Shield	Individual / Overall Aluminum Foil / Drain wire	Outer Sheath	Low Smoke Zero Halogen (LSZH)	Plug	Gold plated connector	Installation Temperature	0°C ~ +50°C	Operating Temperature	-20°C ~ +60°C
Conductor	26AWG, Stranded Copper														
Insulation	Foamed Polyethylene (FPE)														
Shield	Individual / Overall Aluminum Foil / Drain wire														
Outer Sheath	Low Smoke Zero Halogen (LSZH)														
Plug	Gold plated connector														
Installation Temperature	0°C ~ +50°C														
Operating Temperature	-20°C ~ +60°C														
FEATURES	STANDARDS COMPLIANCE														
<ul style="list-style-type: none"><li>* Independently tested and verified by ETL</li><li>* Guaranteed to meet TIA 568 C.2 and ISO/IEC 11801 specifications</li><li>* Snag-less Protection Design</li><li>* Multi-Color options available</li></ul>	<ul style="list-style-type: none"><li>* TIA 568 C.2</li><li>* ISO 11801 CLASS EA</li><li>* ETL approved</li><li>* UL Listed</li></ul>														

#### ORDERING INFORMATION

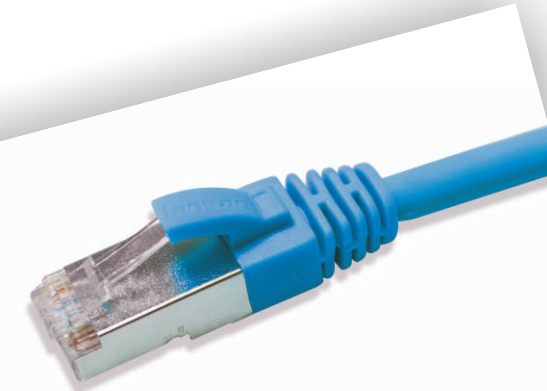
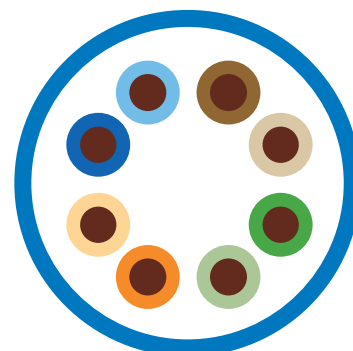
##### Description

LS-6A F/FTP Patch Cord PVC CMR   \*\*   XX M  
LS-6A F/FTP Patch Cord PVC CMP   \*\*   XX M  
LS-6A F/FTP Patch Cord LSZH   \*\*   XX M

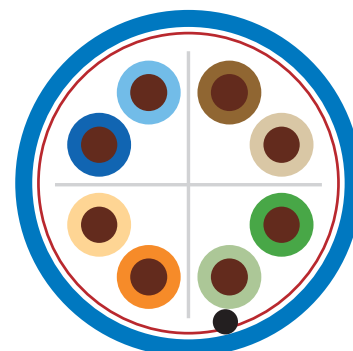




# PATCH CORD Category 6 Un-shield



# PATCH CORD Category 6 Shield



## Category 6 U/UTP Patch Cord

### UNSHIEDED COPPER CABLING SYSTEM

DESCRIPTION	SPECIFICATION	
Category 6 U/UTP Patch Cords are made in flexible stranded conductor with Snag-less Booted Design, easy to insert and remove cables in high density applications.  Combined with Un-Shield Keystone, LAN Cable and Patch Panel, it provides excellent compatible performance.	Conductor	24AWG, Stranded Copper
	Insulation	High Density Polyethylene (HDPE)
	Shield	Overall Aluminum Foil / Drain wire
	Outer Sheath	Low Smoke Zero Halogen (LSZH)
	Plug	Gold plated connector
	Installation Temperature	0°C ~ +50°C
	Operating Temperature	-20°C ~ +60°C
FEATURES	STANDARDS COMPLIANCE	
* Independently tested and verified by ETL * Guaranteed to meet TIA 568 C.2 and ISO/IEC 11801 specifications * Snag-less Protection Design * Multi-Color options available	* TIA 568 C.2	
	* ISO 11801 CLASS D	
	* ETL approved	
	* UL Listed	

#### ORDERING INFORMATION

##### Description

LS-6 U/UTP Patch Cord PVC CM \*\* XX M  
LS-6 U/UTP Patch Cord PVC CMR \*\* XX M  
LS-6 U/UTP Patch Cord PVC CMP \*\* XX M  
LS-6 U/UTP Patch Cord LSZH \*\* XX M

## Category 6 F/UTP Patch Cord

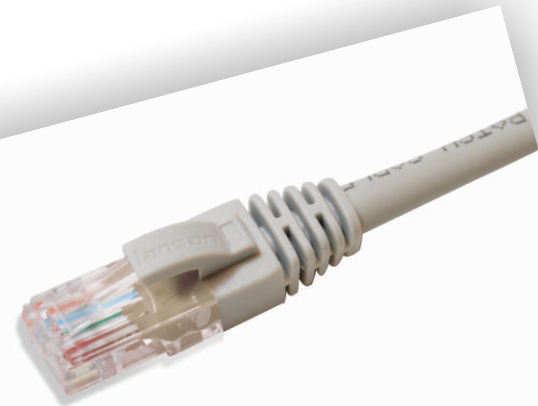
### SHIEDED COPPER CABLING SYSTEM

DESCRIPTION	SPECIFICATION	
Category 6 F/UTP Patch Cords are made in flexible stranded conductor with Snag-less Booted Design, easy to insert and remove cables in high density applications.  Combined with Shield Keystone, LAN Cable and Patch Panel, it provides excellent compatible performance.	Conductor	26AWG, Stranded Copper
	Insulation	High Density Polyethylene (HDPE)
	Shield	Overall Aluminum Foil Tape / Drain Wire
	Outer Sheath	Polyvinyl Chloride (PVC)
	Plug	Gold plated connector
	Installation Temperature	0°C ~ +50°C
	Operating Temperature	-20°C ~ +60°C
FEATURES	STANDARDS COMPLIANCE	
* Independently tested and verified by ETL * Guaranteed to meet TIA 568 C.2 and ISO/IEC 11801 specifications * Snag-less Protection Design * Multi-Color options available	* TIA 568 C.2	
	* ISO 11801 CLASS D	
	* ETL approved	
	* UL Listed	

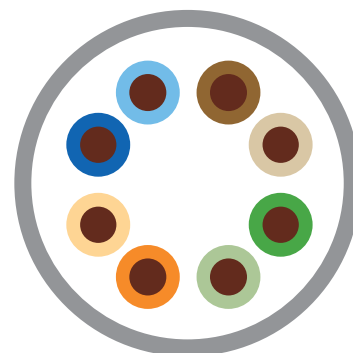
#### ORDERING INFORMATION

##### Description

LS-6 F/UTP Patch Cord PVC CM \*\* XX M  
LS-6 F/UTP Patch Cord PVC CMR \*\* XX M  
LS-6 F/UTP Patch Cord PVC CMP \*\* XX M  
LS-6 F/UTP Patch Cord LSZH \*\* XX M



## PATCH CORD Category 5E Un-shield



### Category 5E U/UTP Patch Cord

#### UNSHIEDED COPPER CABLING SYSTEM

##### DESCRIPTION

Category 5E U/UTP Patch Cords are made in flexible stranded conductor with Snag-less Booted Design, easy to insert and remove cables in high density applications.

Combined with Un-Shield Keystone, LAN Cable and Patch Panel, it provides excellent compatible performance.

##### FEATURES

- \* Independently tested and verified by ETL
- \* Guaranteed to meet TIA 568 C.2 and ISO/IEC 11801 specifications
- \* Snag-less Protection Design
- \* Multi-Color options available

##### SPECIFICATION

Conductor	24AWG, Stranded Copper
Insulation	High Density Polyethylene (HDPE)
Outer Sheath	Polyvinyl Chloride (PVC)
Plug	Gold plated connector
Installation Temperature	0°C ~ +50°C
Operating Temperature	-20°C ~ +60°C

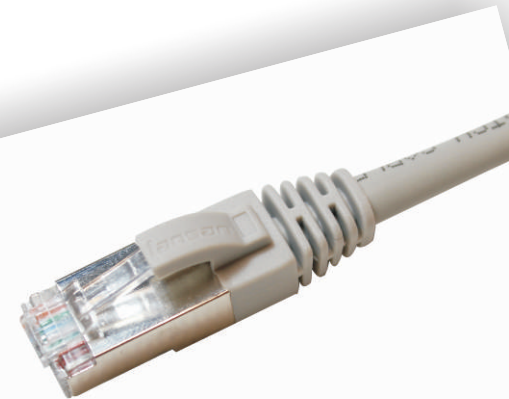
##### STANDARDS COMPLIANCE

- \* TIA 568 C.2
- \* ISO 11801 CLASS D
- \* ETL approved
- \* UL Listed

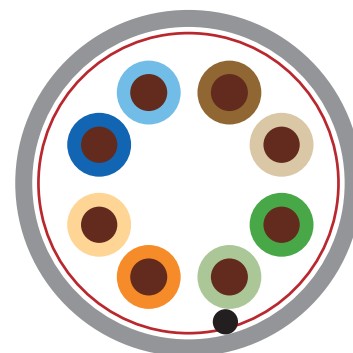
##### ORDERING INFORMATION

###### Description

LS-5E U/UTP Patch Cord PVC CM \*\* XX M  
LS-5E U/UTP Patch Cord PVC CMR \*\* XX M  
LS-5E U/UTP Patch Cord PVC CMP \*\* XX M  
LS-5E U/UTP Patch Cord LSZH \*\* XX M



## PATCH CORD Category 5E Shield



### Category 5E F/UTP Patch Cord

#### SHIEDED COPPER CABLING SYSTEM

##### DESCRIPTION

Category 5E F/UTP Patch Cords are made in flexible stranded conductor with Snag-less Booted Design, easy to insert and remove cables in high density applications.

Combined with Shield Keystone, LAN Cable and Patch Panel, it provides excellent compatible performance.

##### FEATURES

- \* Independently tested and verified by ETL
- \* Guaranteed to meet TIA 568 C.2 and ISO/IEC 11801 specifications
- \* Snag-less Protection Design
- \* Multi-Color options available

##### SPECIFICATION

Conductor	26AWG, Stranded Copper
Insulation	High Density Polyethylene (HDPE)
Shield	Overall Aluminum Foil Tape / Drain Wire
Outer Sheath	Polyvinyl Chloride (PVC)
Plug	Gold plated connector
Installation Temperature	0°C ~ +50°C
Operating Temperature	-20°C ~ +60°C

##### STANDARDS COMPLIANCE

- \* TIA 568 C.2
- \* ISO 11801 CLASS D
- \* ETL approved
- \* UL Listed

##### ORDERING INFORMATION

###### Description

LS-5E F/UTP Patch Cord PVC CM \*\* XX M  
LS-5E F/UTP Patch Cord PVC CMR \*\* XX M  
LS-5E F/UTP Patch Cord PVC CMP \*\* XX M  
LS-5E F/UTP Patch Cord LZSH \*\* XX M





# KEYSTONE JACK

## Category 6A Un-shield

### Cat 6A Un-Shield 180°

#### QUICK INSTALLATION SOLUTION

##### DESCRIPTION

Shield Keystone Jack with Quick Tool design allows installer to entry cable in the most efficient way.

Combined with Shield LAN Cable, Patch Cords, and Patch Panel, it provides excellent compatible performance and extra dB value for full series cabling system.

##### FEATURES

- \* Easy Wiring and Termination Design
- \* Quick Installation Design
- Universal Design

##### STANDARDS COMPLIANCE

- \* TIA 568 C.2
- \* ISO 11801 CLASS EA
- \* UL Listed
- \* 10G BASE-T Networks supported

##### ELECTRICAL

Electrical Insulation Resistance : 500mΩ min.@ 100V DC  
Dielectric Withstanding Voltage : 1000V D.C or A.C Peak Contact to Contact @ 60Hz for 1 minute

##### MECHANICAL

Insertion / Extraction Life : 750 Cycles Minimum  
IDC Wire Gauge : 22 ~ 24 AWG

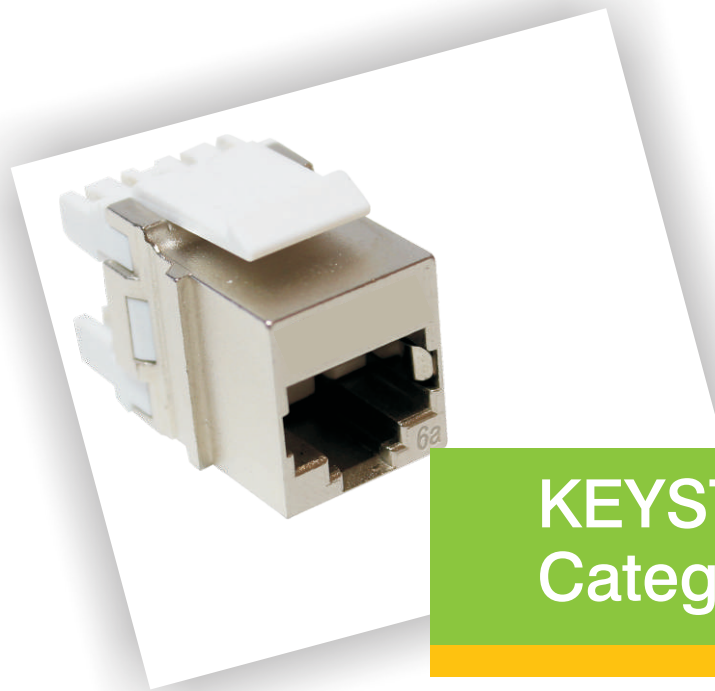
##### PHYSICAL

Housing : High-Impact, Flame-Retardant Plastic, UL 94V-0  
Spring Wire : Phosphor Bronze Alloy Plated with 50 micro-inch of Gold  
IDC : Phosphor Bronze Alloy with 100 micro-inch 100% Sn Alloy

##### ORDERING INFORMATION

###### Description

LS-6A Cat.6A Keystone Jack, Un-shield 180 degree, white, Tool Type  
LS-6A Cat.6A Keystone Jack, Un-shield 180 degree, white



# KEYSTONE JACK

## Category 6A Shield

### Cat 6A Shield 180°

#### QUICK INSTALLATION SOLUTION

##### DESCRIPTION

Shield Keystone Jack with Quick Tool design allows installer to entry cable in the most efficient way.

Metal shell provides fully shield protection to avoid noise.

Combined with Shield LAN Cable, Patch Cords, and Patch Panel, it provides excellent compatible performance and extra dB value for full series cabling system.

##### FEATURES

- \* Easy Wiring and Termination Design
- \* Quick Installation Design
- Universal Design

##### STANDARDS COMPLIANCE

- \* TIA 568 C.2
- \* ISO 11801 CLASS EA
- \* UL Listed
- \* 10G BASE-T Networks supported

##### ELECTRICAL

Electrical Insulation Resistance : 500mΩ min.@ 100V DC  
Dielectric Withstanding Voltage : 1000V D.C or A.C Peak Contact to Contact @ 60Hz for 1 minute

##### MECHANICAL

Insertion / Extraction Life : 750 Cycles Minimum  
IDC Wire Gauge : 22 ~ 24 AWG

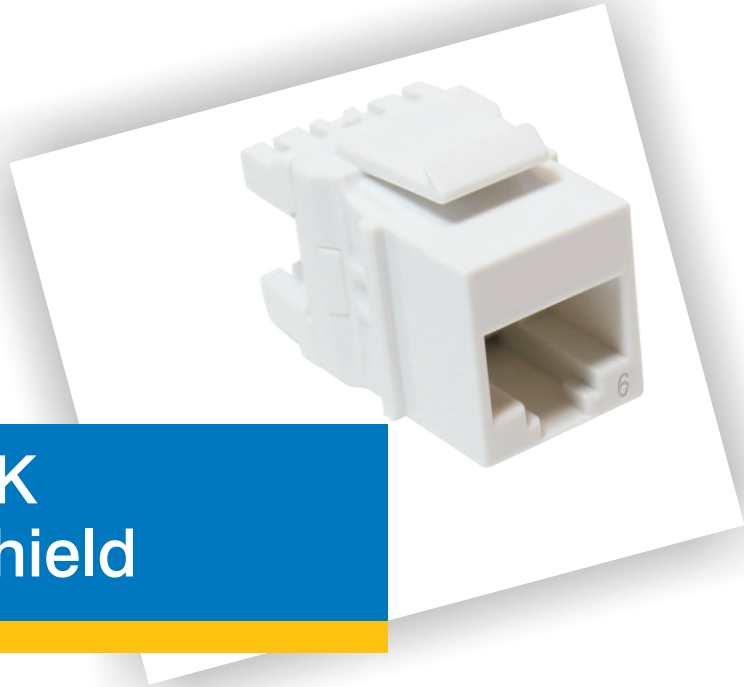
##### PHYSICAL

Housing : High-Impact, Flame-Retardant Plastic, UL 94V-0  
Spring Wire : Phosphor Bronze Alloy Plated with 50 micro-inch of Gold  
IDC : Phosphor Bronze Alloy with 100 micro-inch 100% Sn Alloy

##### ORDERING INFORMATION

###### Description

LS-6A Cat.6A Keystone Jack, Shield 180 degree, white, Tool Type  
LS-6A Cat.6A Keystone Jack, Shield 180 degree, white



# KEYSTONE JACK

## Category 6 Un-shield

### Cat 6 Un-Shield 180°

#### QUICK INSTALLATION SOLUTION

DESCRIPTION	FEATURES
<p>Shield Keystone Jack with Quick Tool design allows installer to entry cable in the most efficient way.</p> <p>Combined with Shield LAN Cable, Patch Cords, and Patch Panel, it provides excellent compatible performance and extra dB value for full series cabling system.</p>	<ul style="list-style-type: none"><li>* Easy Wiring and Termination Design</li><li>* Quick Installation Design</li><li>Universal Design</li></ul>
	STANDARDS COMPLIANCE
	<ul style="list-style-type: none"><li>* TIA 568 C.2</li><li>* ISO 11801 CLASS E</li><li>* UL Listed</li></ul>

#### ELECTRICAL

Electrical Insulation Resistance : 500m $\Omega$  min.@ 100V DC  
Dielectric Withstanding Voltage : 1000V D.C or A.C Peak Contact to Contact @ 60Hz for 1 minute

#### MECHANICAL

Insertion / Extraction Life : 750 Cycles Minimum  
IDC Wire Gauge : 22 ~ 24 AWG

#### PHYSICAL

Housing : High-Impact, Flame-Retardant Plastic, UL 94V-0  
Spring Wire : Phosphor Bronze Alloy Plated with 50 micro-inch of Gold  
IDC : Phosphor Bronze Alloy with 100 micro-inch 100% Sn Alloy

#### ORDERING INFORMATION

##### Description

LS-6 Cat.6 Keystone Jack, Un-shield 180 degree, white, Tool Type  
LS-6 Cat.6 Keystone Jack, Un-shield 180 degree, white



# KEYSTONE JACK

## Category 6 Shield

### Cat 6 Shield 180°

#### QUICK INSTALLATION SOLUTION

DESCRIPTION	FEATURES
<p>Shield Keystone Jack with Quick Tool design allows installer to entry cable in the most efficient <b>way</b></p> <p>Metal shell provides fully shield protection to avoid noise.</p> <p>Combined with Shield LAN Cable, Patch Cords, and Patch Panel, it provides excellent compatible performance and extra dB value for full series cabling system.</p>	<ul style="list-style-type: none"><li>* Easy Wiring and Termination Design</li><li>* Quick Installation Design</li><li>Universal Design</li></ul>
	STANDARDS COMPLIANCE
	<ul style="list-style-type: none"><li>* TIA 568 C.2</li><li>* ISO 11801 CLASS E</li><li>* UL Listed</li></ul>

#### ELECTRICAL

Electrical Insulation Resistance : 500m $\Omega$  min.@ 100V DC  
Dielectric Withstanding Voltage : 1000V D.C or A.C Peak Contact to Contact @ 60Hz for 1 minute

#### MECHANICAL

Insertion / Extraction Life : 750 Cycles Minimum  
IDC Wire Gauge : 22 ~ 24 AWG

#### PHYSICAL

Housing : High-Impact, Flame-Retardant Plastic, UL 94V-0  
Spring Wire : Phosphor Bronze Alloy Plated with 50 micro-inch of Gold  
IDC : Phosphor Bronze Alloy with 100 micro-inch 100% Sn Alloy

#### ORDERING INFORMATION

##### Description

LS-6 Cat.6 Keystone Jack, Shield 180 degree, white, Tool Type  
LS-6 Cat.6 Keystone Jack, Shield 180 degree, white





# KEYSTONE JACK Category 5E Un-shield

## Cat 5E Un-Shield 180°

### QUICK INSTALLATION SOLUTION

#### DESCRIPTION

Un-Shield Keystone Jack with Quick Tool design allows installer to entry cable in the most efficient way.

Combined with Un-Shield LAN Cable, Patch Cords, and Patch Panel, it provides excellent compatible performance and extra dB value for full series cabling system.

#### FEATURES

- \* Easy Wiring and Termination Design
- \* Quick Installation Design
- Universal Design

#### STANDARDS COMPLIANCE

- \* TIA 568 C.2
- \* ISO 11801 CLASS D
- \* UL Listed

#### ELECTRICAL

Electrical Insulation Resistance : 500mΩ min.@ 100V DC  
Dielectric Withstanding Voltage : 1000V D.C or A.C Peak Contact to Contact @ 60Hz for 1 minute

#### MECHANICAL

Insertion / Extraction Life : 750 Cycles Minimum  
IDC Wire Gauge : 22 ~ 24 AWG

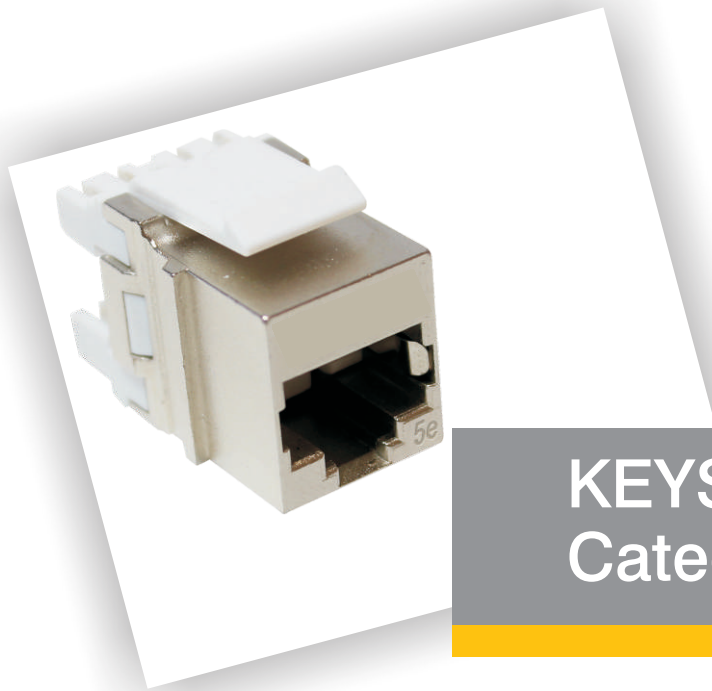
#### PHYSICAL

Housing : High-Impact, Flame-Retardant Plastic, UL 94V-0  
Spring Wire : Phosphor Bronze Alloy Plated with 50 micro-inch of Gold  
IDC : Phosphor Bronze Alloy with 100 micro-inch 100% Sn Alloy

#### ORDERING INFORMATION

##### Description

LS-5E Cat.5E Keystone Jack, Un-shield 180 degree, white, Tool Type  
LS-5E Cat.5E Keystone Jack, Un-shield 180 degree, white



# KEYSTONE JACK Category 5E Shield

## Cat 5E Shield 180°

### QUICK INSTALLATION SOLUTION

#### DESCRIPTION

Shield Keystone Jack with Quick Tool design allows installer to entry cable in the most efficient way.

Metal shell provides fully shield protection to avoid noise.

Combined with Shield LAN Cable, Patch Cords, and Patch Panel, it provides excellent compatible performance and extra dB value for full series cabling system.

#### FEATURES

- \* Easy Wiring and Termination Design
- \* Quick Installation Design
- Universal Design

#### STANDARDS COMPLIANCE

- \* TIA 568 C.2
- \* ISO 11801 CLASS D
- \* UL Listed

#### ELECTRICAL

Electrical Insulation Resistance : 500mΩ min.@ 100V DC  
Dielectric Withstanding Voltage : 1000V D.C or A.C Peak Contact to Contact @ 60Hz for 1 minute

#### MECHANICAL

Insertion / Extraction Life : 750 Cycles Minimum  
IDC Wire Gauge : 22 ~ 24 AWG

#### PHYSICAL

Housing : High-Impact, Flame-Retardant Plastic, UL 94V-0  
Spring Wire : Phosphor Bronze Alloy Plated with 50 micro-inch of Gold  
IDC : Phosphor Bronze Alloy with 100 micro-inch 100% Sn Alloy

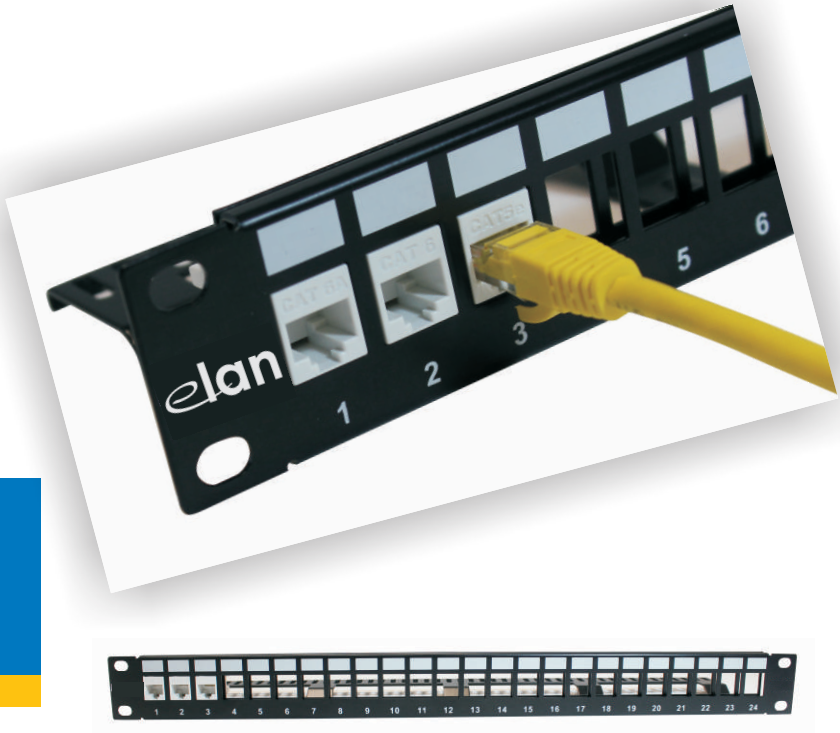
#### ORDERING INFORMATION

##### Description

LS-5E Cat.5E Keystone Jack, Shield 180 degree, white, Tool Type  
LS-5E Cat.5E Keystone Jack, Shield 180 degree, white

PATCH PANEL

Un-shield



Un-Shield Blank Patch Panel

UNSHIEDED COPPER CABLING SYSTEM

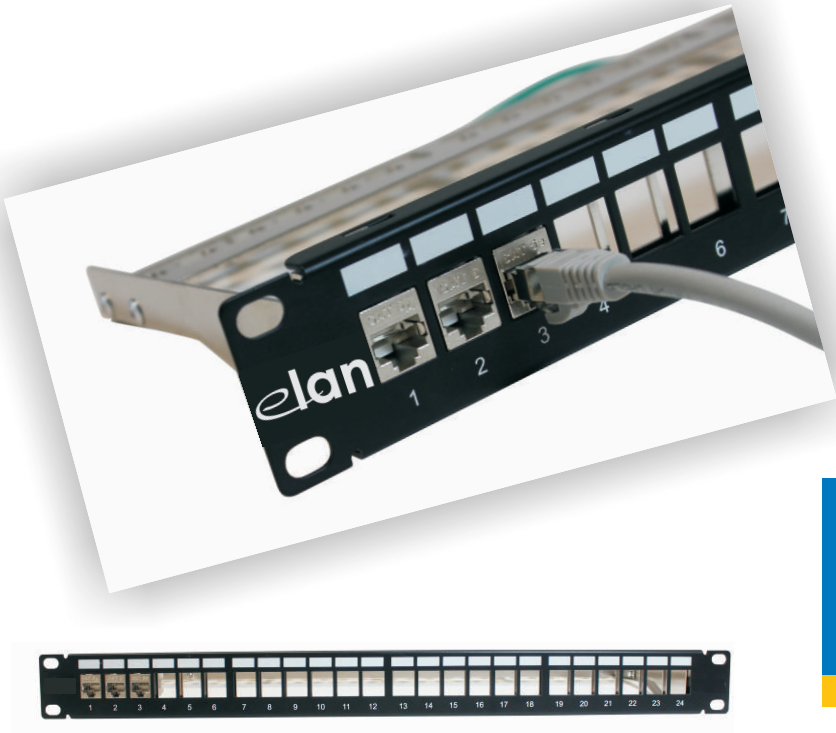
DESCRIPTION
Un-Shield Blank Patch Panel with Quick Tool design allows installer to install in the most efficient way.
It is compatible with full series keystone jack, included normal type and Quick tool type.
Combined with Un-Shield LAN Cable, Patch Cords, and Keystone Jack, it provides excellent compatible performance and extra dB value for full series cabling system.

FEATURES
* Quick Installation Design
* Full Series Keystone Jack supported
* Back Frame for management
STANDARDS COMPLIANCE
* TIA 568 C.2
* ISO 11801
* UL Listed

ORDERING INFORMATION

Description

- LS-6A 1HU Cat.6A Panel RJ45 Unshielded 24P  
1HU Blank Panel 24P
- LS-6 1HU Cat.6 Panel RJ45 Unshielded 24P  
1HU Blank Panel 24P
- LS-5E 1HU Cat.5E Panel RJ45 Unshielded 24P  
1HU Blank Panel 24P



PATCH PANEL

Shield

Shield Blank Patch Panel

SHIEDED COPPER CABLING SYSTEM

DESCRIPTION
Shield Blank Patch Panel with Quick Tool design allows installer to install in the most efficient way.
It is compatible with full series keystone jack, included normal type and Quick tool type.
Combined with Shield LAN Cable, Patch Cords, and Keystone Jack, it provides excellent compatible performance and extra dB value for full series cabling system.

FEATURES
* Quick Installation Design
* Full Series Keystone Jack supported
* Back Frame for management
STANDARDS COMPLIANCE
* TIA 568 C.2
* ISO 11801
* UL Listed

ORDERING INFORMATION

Description

- LS-6A 1HU Cat.6A Panel RJ45 Shielded 24P  
1HU Blank Panel Shield 24P
- LS-6 1HU Cat.6 Panel RJ45 Shielded 24P  
1HU Blank Panel Shield 24P
- LS-5E 1HU Cat.5E Panel RJ45 Shielded 24P  
1HU Blank Panel Shield 24P



# COPPER SYSTEM SOLUTION

## Angled Faceplate



- \* Angled Design
- \* Dust Cover
- \* Concise Identify
- \* Universal Size



### DESCRIPTION

Angled Faceplate, has dust cover and angled design applied in work area with standard size 86x86 and compatible with full series keystone jacks.

### ORDERING INFORMATION

#### Description

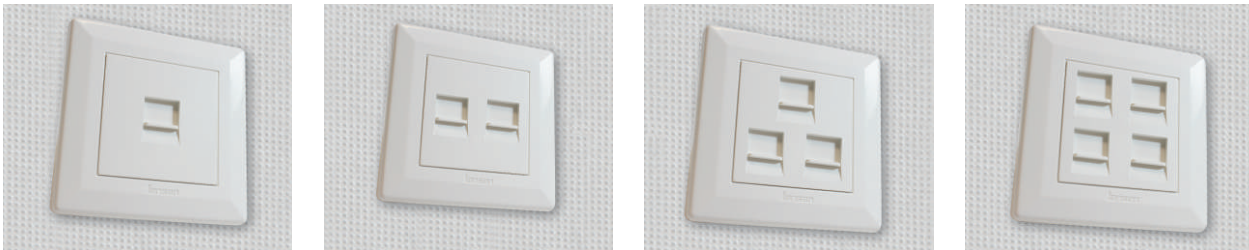
86X86 45degree Inner White 1P  
86X86 45degree Inner White 2P  
86X86 45degree Outer White 1P  
86X86 45degree Outer White 2P

# COPPER SYSTEM SOLUTION

## Flat Faceplate



- \* Dust Cover
- \* Concise Identify
- \* Universal Size



### DESCRIPTION

Flat Faceplate, has dust cover and flat design with full applied in work area with standard size 86x86 and compatible series keystone jacks.

### ORDERING INFORMATION

#### Description

86X86 Flat White 1P  
86X86 Flat White 2P  
86X86 Flat White 3P  
86X86 Flat White 4P

## JOIN US

EPS-CONNECT is looking for Distributors/Reseller in CEE,  
provides you professional structured cabling system consulting  
service for project or products.

- \* **25 Years Warranty**
- \* **Installer Course Training**
- \* **Price Protection agreement**

Be a distributor, please contact at [info@eps.connect.com](mailto:info@eps.connect.com)



©Copyright EPS-CONNECT LTD 2018. All rights reserved. All unauthorized quotation and reproduction is forbidden except for brief examples used in reviews of this work by periodical publications where the source of information is credited to EPS-CONNECT LTD., or the reproduction of this material for the purpose of preparing specifications and/or bids in which ELAN products are indicated. To request permission, please contact to EPS-CONNECT LTD.

Information in this catalog is provides as a guide to product selection and is believed to be correct at the of publication.

## CONTACT US



### International Office

**România**  
[romania@eps-connect.com](mailto:romania@eps-connect.com)

**Bulgária**  
[bulgaria@eps-connect.com](mailto:bulgaria@eps-connect.com)

**Szlovénia**  
[szlovenia@eps-connect.com](mailto:szlovenia@eps-connect.com)

### Headquarters

Budapest  
1138, Váci út 168.  
[elan@eps-connect.com](mailto:elan@eps-connect.com)